



Cosmo Hotel Kuala Lumpur
13 - 15, Leboh Ampang, 50050 Kuala Lumpur
T: +60 3 2030 1888 F: +60 3 2030 1988 E: info@cosmohotelkl.com

www.cosmohotelkl.com

Cosmo Hotel Kuala Lumpur is owned by Mayland Group and managed by Superb Upline Sdn. Bhd. (967496-M)





OVERVIEW

A mid-scale contemporary hotel, Cosmo Hotel Kuala Lumpur features 347 guestrooms and suites, 5 meeting rooms, state-of-the-art gymnasium, a Lobby Lounge and all-day dining outlet as well as Starbucks Coffee to cater for both business and leisure travellers.

Located in the heart of Kuala Lumpur and within a mere 2-minute walk to the Masjid Jamek LRT interchange station, the hotel is ideal for both business travellers and leisure seekers. Apart from the financial institutions surrounding the hotel, other nearby places of interest include the historical landmarks of Sultan Abdul Samad Building and Merdeka Square; and shopping enclaves to the likes of Central Market, Chinatown (Petaling Street) and Little India to name a few.

ACCOMMODATION

- Cosmo Room
- Deluxe
- Executive
- Studio Suite
- Junior Suite

ROOM FEATURES AND FACILITIES

- Free In-room WiFi
- HDMI Flat Screen TV
- Satellite TV Channels
- Air Conditioning
- Complimentary Bottled Water
- Room Service
- Mini Fridge
- Deposit Box
- Hair Dryer
- Iron and Ironing Board
- Non-smoking Floors
- Disabled Rooms
- In-room Tea/Coffee Making Facility
- International Direct Dailing Telephone
- Interconnecting Room (Upon Request)

HOTEL FEATURES

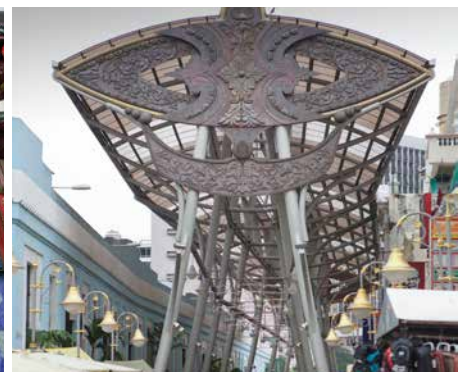
- Concierge Service
- Luggage Storage
- All Day Dining
- Cafe – Starbucks
- Tour and Travel Service
- Gymnasium
- Foreign Currency Exchange
- Wake-up Call Service (upon request)
- Lobby Lounge
- Laundry, Dry Cleaning and Pressing Service
- Meeting, Event and Banquet Facilities
- WiFi Internet access



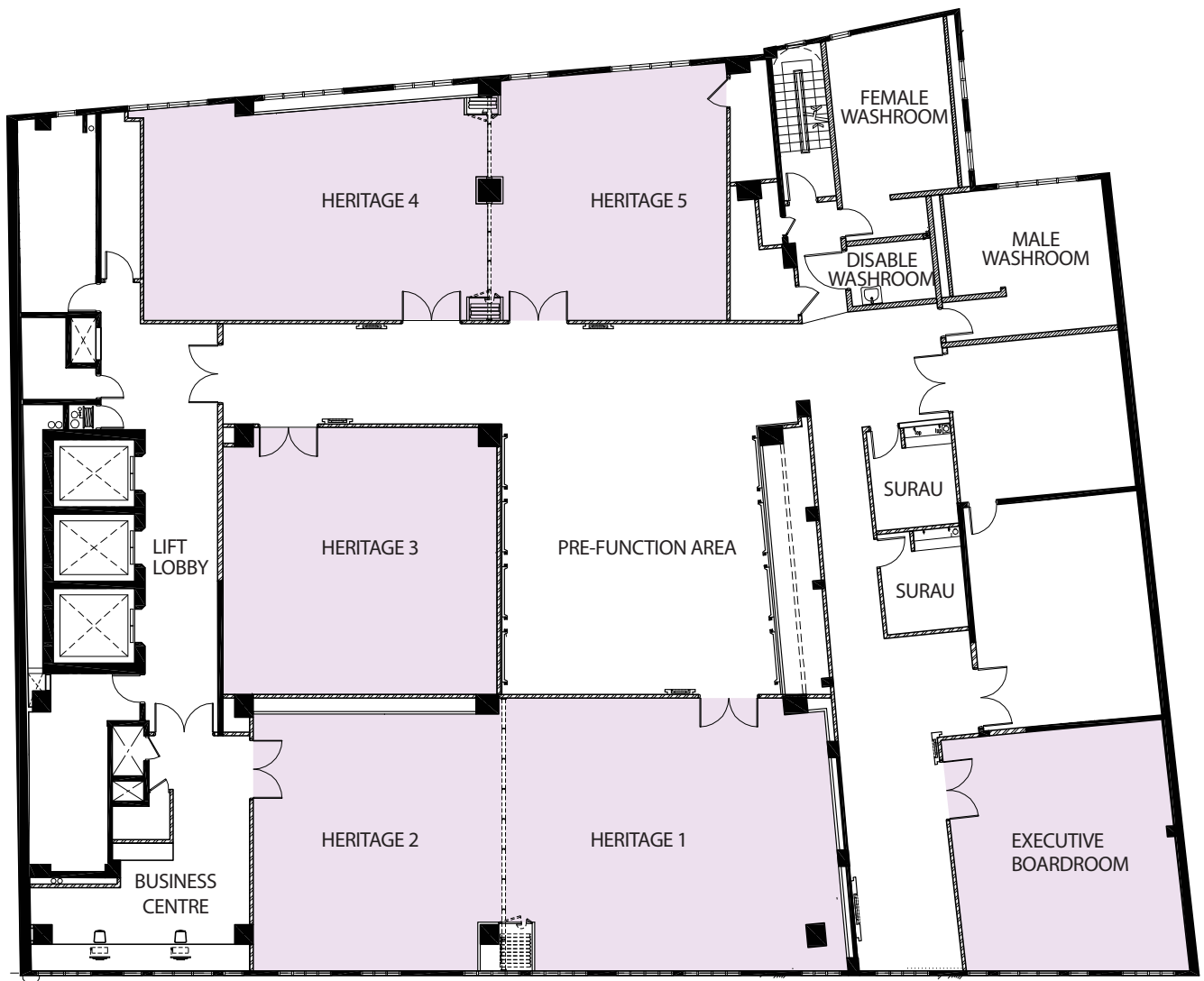
Sultan Abdul Samad Building



Chinatown (Petaling Street)



Central Market



MEETING FACILITIES

Whether you are planning a conference, a board meeting or a lavish private dinner, Cosmo Hotel Kuala Lumpur provides perfect service, bespoke cuisine and cutting edge technology in several stylish settings. With a variety of spaces, state-of-the-art technology and original menus, Cosmo Hotel Kuala Lumpur is undoubtedly the perfect venue of choice for those who want to make a statement.

	Width (M)	Length (M)	Height (M)	Area (M ²)	Theatre	Classroom	U-shape	Banquet	Fishbone	Boardroom
Heritage 1	7.5	7.5	2.3	56	50	30	21	30	27	-
Heritage 2	8	7.3	2.3	58	35	18	18	30	24	-
Heritage 1 & 2	15.5	14.8	2.3	114	90	54	36	60	51	-
Heritage 3	7.9	7.9	2.3	63	45	24	18	40	27	-
Heritage 4	7	7.7	2.3	59	35	21	15	30	27	-
Heritage 5	6.1	9.6	2.3	54	60	36	24	50	27	-
Heritage 4 & 5	13.1	17.3	2.3	113	110	69	45	80	63	-
Executive Boardroom	6.8	6.7	2.3	45	-	-	-	-	-	14

NEARBY ATTRACTIONS AND COMMERCIAL

- Masjid Jamek interchange LRT station – 2 mins walk
- Masjid Jamek – 2 mins walk
- Central Market – 5 mins walk
- Little India – 7 mins walk
- Sultan Abdul Samad Building – 10 mins walk
- Merdeka Square – 10 mins walk
- Chinatown (Petaling Street) – 13 mins walk
- UTC Pudu Sentral – 14 mins walk/5 min by LRT (Sri Petaling Line)
- Jakel Mall – 15 mins walk
- Lulu Shopping & Hypermarket – 15 mins walk
- Sogo Shopping Centre – 5 mins by LRT (Sentul Timur Line)
- KL Sentral Transit Hub – 8 mins by LRT (Kelana Jaya Line)
- Petronas Twin Towers – 10 mins by LRT (Terminal Putra Line)
- Suria KLCC Shopping Centre – 10 mins by LRT (Terminal Putra Line)
- Petrosains – 10 mins by LRT (Terminal Putra Line)
- Aquaria KLCC – 10 mins by LRT (Terminal Putra Line)
- Kuala Lumpur Convention Centre – 10 mins drive
- Lake Gardens – 10 mins drive
- Bird Park – 10 mins drive
- PWTC – 14 mins drive/15 mins by LRT (Sentul Timur Line)
- Pavilion Shopping Centre – 15 mins drive
- Bintang Walk – 15 mins drive
- Kuala Lumpur Tower – 17 mins drive
- MATRADE – 21 mins drive

